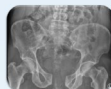


INTERDISCIPLINARY PELVIC TRAUMA COURSE



Course Program

Day 1 (Friday)

Module 1 (Emergency Management)

08:30: Registration

Session 1: Emergency Department Phase

09:00 – 09:05: Welcome / Introduction

09:05 – 09:20: Surgical Anatomy - Classification of Pelvic trauma patient

09:20 – 09:35: Resuscitation of hemodynamically unstable patients with pelvic fractures

09:35 – 09:50: Diagnostic and Management of TIC

09:50 – 10:30: Case Presentation

10:30 – 10:45: Coffee Break

Session 2: Emergency Surgical Interventions

10:45 – 11:00: Endovascular Techniques

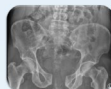
11:00 – 11:15: Surgical bleeding control

11:15 – 11:30: DCO Techniques in Pelvic Trauma

11:30 – 12:00: Case Discussion

12:00 – 13:00: Lunch

INTERDISCIPLINARY PELVIC TRAUMA COURSE



Session 3: Management of Concomitant Injuries 1

13:00 – 13:20: Urogenital Trauma / Diagnostics and Management

13:20 – 13:40: Visceral/intraabdominal and Perineal Trauma

13:40 – 14:00: Vascular Injuries

14:00 – 14:30: Case Presentation

14:30 – 14:45: Coffee Break

Session 4: Management of Concomitant Injuries 2

14:45 – 15:05: Associated Spinal Trauma and Neurological Injuries

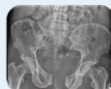
15:05 – 15:25: Local Soft Tissue Trauma / Morel-Lavallee Lesions/ Abdominal Wall Injuries

15:25 – 15:45: Femoral Shaft, Proximal Femur Fracture in Combination with Pelvic Injuries

15:45 – 16:30: Case Presentation

End of Day 1

INTERDISCIPLINARY PELVIC TRAUMA COURSE



Day 2 (Saturday)

Session 5: Surgical Reconstruction and Timing

09:00 – 09:20: Principles and Timing of definitive fracture fixation

09:20 – 09:40: Patient with Laparotomy - Reconstruction and Timing

09:40 – 10:00: Intraoperative Bleeding Control: How I do it?

10:00 – 10:30: Role of "Parkland Trauma Index of Mortality" in treatment of severely injured patients

10:30 – 10:45: Coffee Break

Session 6: Complex Pelvic Ring Reconstructions

10:45 – 11:05: Spino-Pelvic dissociation decision-making for reconstruction

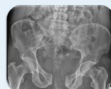
11:05 – 11:25: Geriatric Pelvic fractures - spectrum of a complex problem

11:25 – 11:45: Pre-Existing Conditions: Pregnancy, previous hernia repair, etc..

11:45 – 12:15: Case Discussion

12:15 – 13:15: Lunch

INTERDISCIPLINARY PELVIC TRAUMA COURSE



Session 7: Complex Acetabular Reconstructions

13:15 – 13:35: Diagnosis and Classification of Acetabular fractures

13:35 – 13:55: Choosing the correct surgical approach

13:55 – 14:15: Geriatric acetabular fractures (fix vs replace)

14:15 – 14:45: Case Discussion

14:30 – 14:45: Coffee Break

Session 8: Complications and Adverse Events

14:45 – 15:05: Preventable Adverse Events - not just a complication

15:05 – 15:25: Fracture Related Infections

15:25 – 15:45: Rehabilitation - Chronic Pain

15:45 – 16:05: Management of Malunions / Non-Unions in Pelvis

16:05 – 16:30: Discussion

End of Course